



*Stolen from Neil Metcalfe's facebook page*

# The Gwydyr Mountain Club Newsletter.

July  
2023

Edited:  
Chris Harris

## Coming soon: (details on meets list on GMC website)

<b>4-6 August</b>	<b>Hut Weekend:</b>
<b>4-6 August</b>	<b>Tywyn Meet: At Nuala's</b>
<b>12 August</b>	<b>Carrog to the Pontcysyllte Aquaduct - Chris Harris</b>
<b>19 August</b>	<b>Saturday Walk: Blencathra - Bill Morrison</b>
<b>26 August</b>	<b>Saturday Walk: Berwyns - Dave Gray</b>
<b>1-3 September</b>	<b>Hut Weekend:</b>

## New Additions to meets list:

**2024 Scottish Winter meet at Fort William.** Details on the meets list are from last year but will be updated as soon as the hotel releases details, Probably September.

## Training Courses - Contact Bill Morrison

There are still places available on the club's skills training programme. We have 4 courses scheduled, all are certified by professional bodies and delivered by experienced practitioners and educators. These are commercial courses offered to members at subsidised rates. We have run the Mountain Skills and REC courses in previous years and members' feedback has been very positive.

**Mountain Skills Training** - 5th/6th August. Course accredited by Mountain Training  
Learn or refresh basic mountain skills.

**Rescue Emergency Care** - 25th/26th November. Course accredited by Mountain Training  
Foundational emergency first aid training for hill walkers and climbers

**Bronze Navigation** - 23rd/24th September. Course accredited by the National Navigation Award Scheme.  
Introduction to mountain navigation using paths tracks and other linear features.

**Silver Navigation** - Q1 2023 date to be advised. Course accredited by the National Navigation Award Scheme.  
Advanced navigation training focusing on compass work and open country navigation.

**The cost of each course is £40 - a significant saving on the commercial prices. All courses are run at the club hut.**

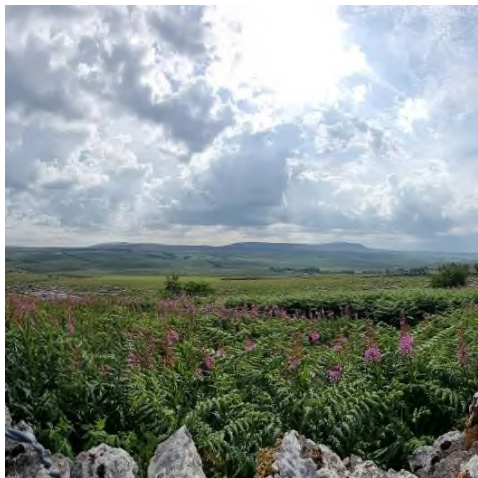
To book onto any of the above courses or get further information email the Membership Secretary - [membership@gwydyrmc.org.uk](mailto:membership@gwydyrmc.org.uk) Bill Morrison, Membership Secretary

## Articles this Month:

There's only been one contribution, so rather a short newsletter.

I can only send out the newsletter if I get contributions so please keep them coming.

### 1) Yorkshire Dales Meet 7<sup>th</sup> – 9<sup>th</sup> July 2023 by Sven Reynolds



The day started with a dry sunny morning, but we were aware of the afternoon's forecasted thunderstorms. We planned a 12.5 mile clockwise, circular route of Ingleborough, via the summit. The group of 12 left Gauber Bunkbarn and headed east for a short road walk to the lane, which led us to the railway bridge and Salt Lake Quarry. This was originally quarried to provide stone for the Settle to Carlisle Railway, now a nature reserve. Steve "Rawhide" Birch took charge of herding cows down the lane, while we passed the naturally exposed limestone to Colt Park, a 17th Century house and farm situated in the shadow of our later ascent of Park Fell.

Heading east through Colt Park, we continued through a few beautiful meadows and we were all really feeling the intense heat of the sun with no breeze. We had beautiful views upward of Simons Fell and Lord's Seat to our right and Pen-y-Ghent and Plower to our left, walking past

Whit-a-Green rocks and onwards for a brief stop at Long Churn Cave, where Richard had previously potholed. We followed the pasture down to the wall lined tree island of the stunning Alum Pot for another brief stop. We then headed to the springs towards Selside where we met the Pennine Bridleway and onwards to the limestone pavement and nature reserves

We stopped in a perfect spot for first lunch, through Sulber Gate to reveal stunning views of Crummack Dale and Moughton Scar, with a clear view south of Pendle Hill in the distance. Weather was already on the turn, we could see darker clouds and hear thunder above Pen-y-Ghent, but the light wind was in favour of our direction. Sue's *Wiggly Jelly Worms* and Sonja's politically correct *Vertically Challenged Semi Precious Stones* were passed around, both of which were nearly as good as the views. The group, being suitably refreshed, then continued along the Pennine Bridleway around Long Scar, down the dale to meet the spectacular Trow Gill. We all stopped to admire the view and spectate as a couple of climbers ascended the rock face.



Continuing along the path and upwards we stopped for a well-earned second lunch stop at Gaping Gill. It was incredibly hot at this stage and the lovely cool beck was a welcome dip for some sizzling feet. Barb, Sonja, Sue and Nicky especially enjoyed the toe dipping. Before leaving Sonja wanted to have a look down the mouth of Gaping Gill.

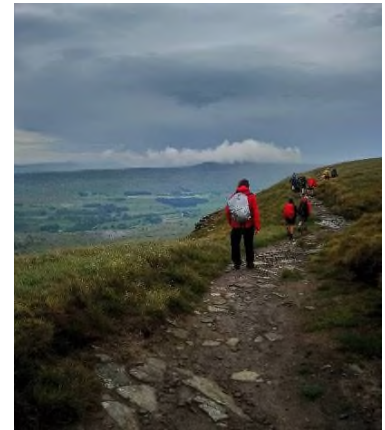
Earlier Sue had explained how she'd bottomed the cavern on a bosun's chair during one of the annual Bradford Potholers events. Sonja seemed interested and keen to do this in the future. That was of course until she actually saw it, then strangely she promptly changed her mind and decided that she didn't want to do it after all!



The weather was starting to cool slightly and a breeze was now threatening a spot or two of rain. Upwards on the path to Little Ingleborough a light drizzle was now coming in. We pushed onwards to summit the busy and rather wet and windy Ingleborough. Even the sheep were trying to take refuge within the crowded shelter, but with Killer Kev in our presence, the wiser among them sensed the impending danger and kept their distance. We didn't stick around at the summit for long before we continued on the path down after a brief stop at the trig point. The path downwards was expectedly busy with more upward foot traffic coming towards us. The path wasn't the busiest I've seen but still resembled the M6. We took the 2nd path off above Humphrey Bottom to circumnavigate Simon Fell leaving the Y3P masses. We stopped briefly for the Inglebrough photos where Andy's perfect shot was spectacularly photobombed in true Gwydyr style.



The drizzle had thankfully stopped by this time, ready for the steep and tricky descent of Park Fell. I was not looking forward to this descent as I knew it was very hard on the knees with a possibility of it being very slippery. Hew and Andy both described the decent as *horrible*, to which I have to completely agree. It was very dry fortunately and we continued without having to resort to my safer plan B which would have increased the walk by 1.5 miles thus delaying the timing of the off the hill pint. A hard walk down back to Colt Park House followed, before returning down the lane to Gauber Bunkbarn for a very quick refresh, ready for dinner at the Station Inn. After a very full day the food was very well earned, huge portions. Jacqui attempted another mountain with her sausage and mash, which was nearly a 3000. Everyone was reasonably happy with the pub fayre. All in all, the group really enjoyed the location, the varying landscapes and scenery of the walk and the luck we had with the weather as we didn't get the heavy rain and thunderstorms forecasted. It was a really lovely weekend and it was nice to get to know a different area that Gwydyr don't often visit as a club meet.



[Gauber Bunk Barn](#) is in a great location for many walks and thoroughly recommended for members who would like to organise a similar smaller meet in the Yorkshire Dales.

Editor's footnote:

### **Craven Pothole Club's Gaping Gill Winch Meet 2023**

Opening Times (provisional)

Friday August 11th: first descent at 09:00 am.

Saturday August 12th to Sunday August 13th: First descent at 08:00 am.

Monday August 14th to Friday August 18th inclusive: First descent at 09:00 am.

Descent Fee: £20 per person (and return!).

Minimum Age - The minimum age is 7 years (at the Meet Coordinator's discretion).

Children must be accompanied by a responsible adult.

Booking - We are unable to take advanced bookings.

**See website for full details**

<https://www.cravenpotholeclub.org/index.php/about-gaping-gill/visit-gaping-gill/9-gaping-gill/visit-gaping-gill/faq>